

**LALEH KHORRAMIAN**

The Baltic Centre for Contemporary Art,  
Gateshead, UK  
April 9 - October 2, 2022









My current series of works called “banners” are collaged paintings on canvas assembled from my paintings, hand painted prints and discarded fabric. The work is suspended scrolllike, with weighted or sculptural element at both ends.













*Infinity face in the company of statues*  
2021 acrylic, ink, oil crayon, spray paint, canvas,  
cotton, hand dyed silk, silk, fleece, velvet, mesh,  
polyester thread, interfacing, fabric glue, poplar  
dowels, gold leaf, hardware 116 x 60 in

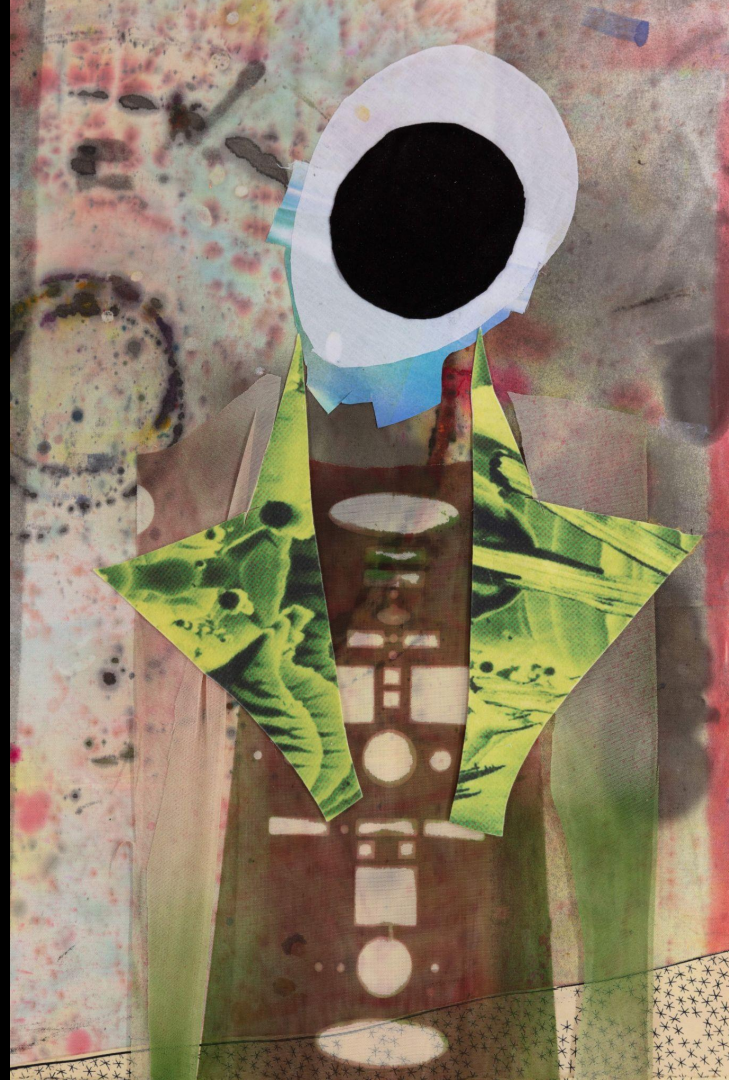


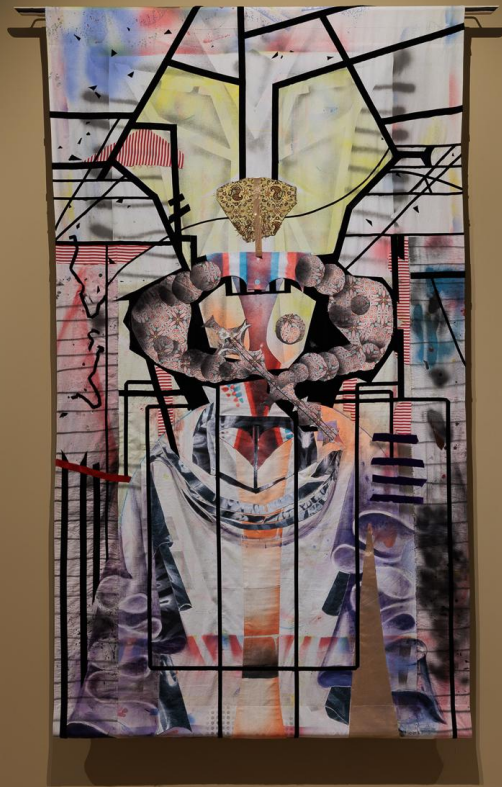
details: *Infinity face in the company of statues*  
2021 acrylic, ink, oil crayon, spray paint,  
canvas, cotton, hand dyed silk, silk, fleece,  
velvet, mesh, polyester thread, interfacing,  
fabric glue, poplar dowels, gold leaf, hardware  
116 x 60 in





details: *Infinity face in the company of statues*  
2021 acrylic, ink, oil crayon, spray paint,  
canvas, cotton, hand dyed silk, silk, fleece,  
velvet, mesh, polyester thread, interfacing,  
fabric glue, poplar dowels, gold leaf, hardware  
116 x 60 in

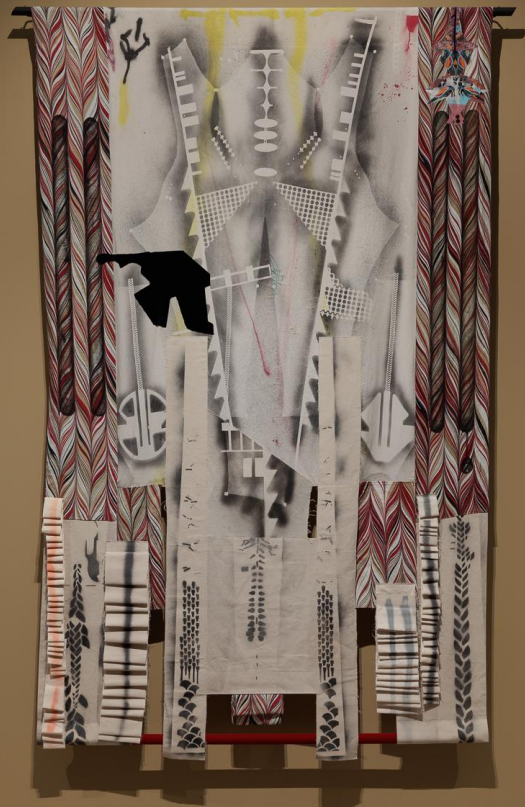




*jag lady* 2022 acrylic, oil paint, ink, oil crayon, spray paint, raw silk, silk, canvas, cotton, metallic fabric, velvet, fleece, polyester thread, poplar dowels, hardware 101 x 61 in

detail: *jag lady* 2022  
acrylic, oil  
paint, ink, oil  
crayon, spray  
paint, raw  
silk, silk,  
canvas,  
cotton,  
metallic  
fabric, velvet,  
fleece,  
polyester  
thread,  
poplar  
dowels,  
hardware 101  
x 61 in





*ghost corset* 2022 acrylic, spray paint, canvas,  
cotton, velvet, embroidery thread, polyester thread,  
poplar dowels, hardware 101 x 66 in

detail: *ghost  
corset 2022*  
acrylic, spray  
paint, canvas,  
cotton, velvet,  
embroidery  
thread, polyester  
thread, poplar  
dowels, hardware  
101 x 66 in







*wonder wonder 2022* acrylic, oil paint, ink, raw silk, silk, canvas, cotton muslin, cotton, metallic polyester, interfacing, polyester thread, fabric glue, birch dowels, hardware 99 x 70 in (251.46 x 177.8 cm)



details: *wonder wonder* 2022 acrylic, oil paint, ink, raw silk, silk, canvas, cotton muslin, cotton, metallic polyester, interfacing, polyester thread, fabric glue, birch dowels, hardware 99 x 70 in (251.46 x 177.8 cm)





*totem of a deity* 2021 acrylic paint, conte, cotton, fleece, silk, spray paint, thread, velvet, canvas, pine, hardware 95 x 62 in (241.3 x 157.48 cm)

detail:  
*totem of  
a deity*  
2021  
acrylic  
paint,  
conte,  
cotton,  
fleece,  
silk,  
spray  
paint,  
thread,  
velvet,  
canvas,  
pine,  
hardwar  
e 95 x  
62 in  
(241.3 x  
157.48  
cm)





*glass person* 2021 acrylic, ink, oil crayon, canvas,  
cotton, hand dyed silk, polyester, raw silk, velvet,  
linen, polyester thread, interfacing, pine, hardware  
95 x 60 in (241.3 x 152.4 cm)



*detail: glass person 2021 acrylic, ink, oil crayon,  
canvas, cotton, hand dyed silk, polyester, raw silk,  
velvet, linen, polyester thread, interfacing, pine,  
hardware 95 x 60 in (241.3 x 152.4 cm)*



*details: glass person 2021 acrylic, ink, oil crayon,  
canvas, cotton, hand dyed silk, polyester, raw  
silk, velvet, linen, polyester thread, interfacing,  
pine, hardware 95 x 60 in (241.3 x 152.4 cm)*







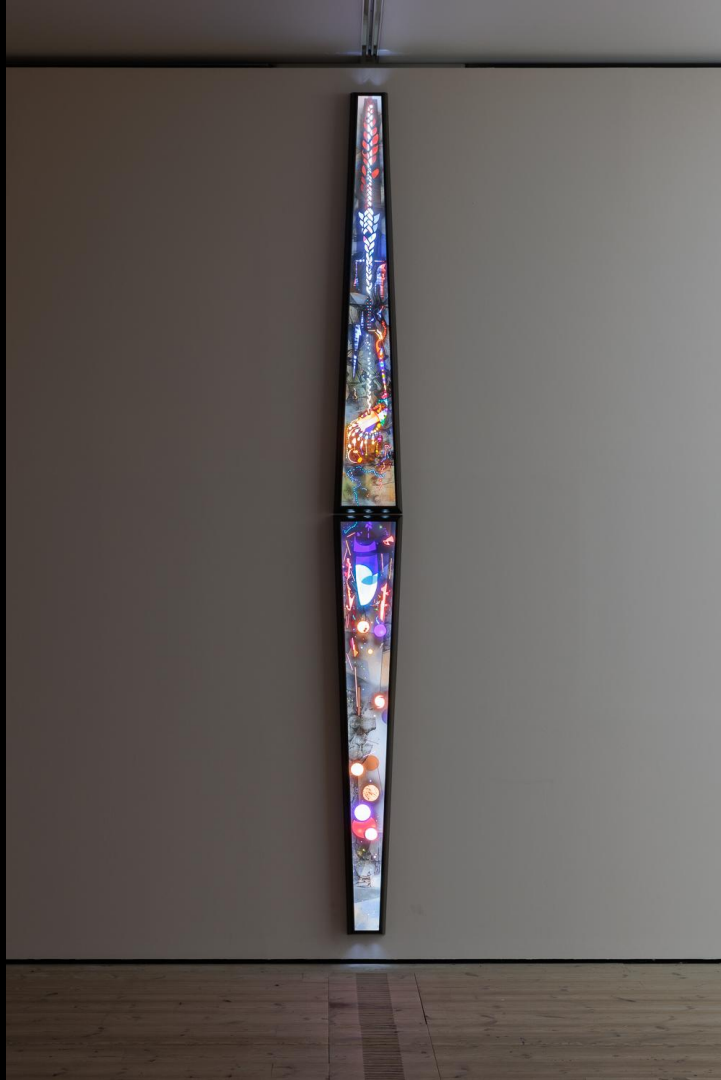


*top:*

*trapezoidal window - creatures* 2022 oil paint, spray paint, polypropylene, colored gels, plexiglass, LED modules, african mahogany, pine, aluminum, lacquer 79.5 x 13.5 x 3.5 in (201.93 x 34.29 x 8.89 cm)


*bottom:*

*trapezoidal window - spheres* 2022 oil paint, spray paint, polypropylene, colored gels, plexiglass, LED modules, african mahogany, pine, aluminum, lacquer 79.5 x 13.5 x 3.5 in (201.93 x 34.29 x 8.89 cm)

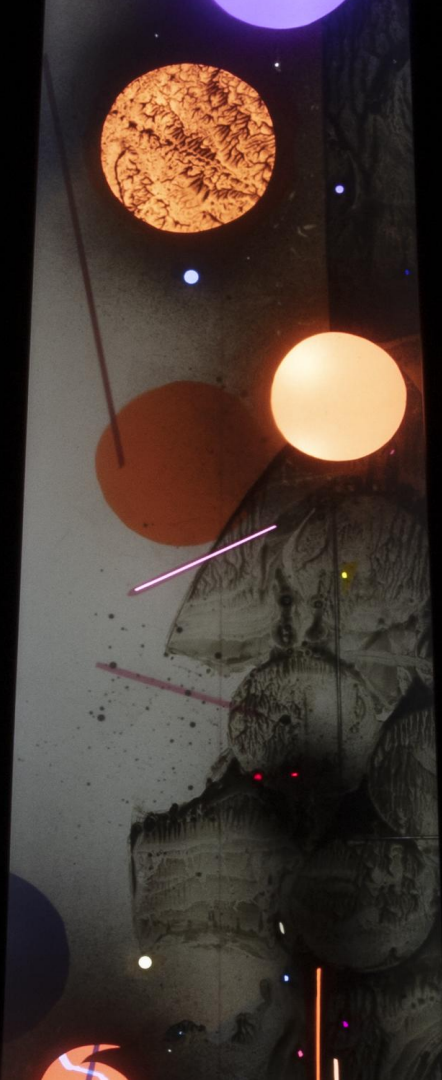


detail- *trapezoidal window - spheres* 2022 oil paint,  
spray paint, polypropylene, colored gels,  
plexiglass, LED modules, african mahogany, pine,  
aluminum, lacquer 79.5 x 13.5 x 3.5 in (201.93 x  
34.29 x 8.89 cm)



A vertical, trapezoidal artwork titled 'creatures'. The background is a dark, textured surface with light-colored, wavy, organic patterns. A vertical strip of colorful, translucent material, possibly polypropylene, runs down the center, illuminated from within, showing a spectrum of colors from red to blue. Small, multi-colored dots are scattered along this strip. At the bottom, there are bright, glowing circular shapes in orange and red. The overall effect is a vibrant, abstract composition with a sense of movement and light.

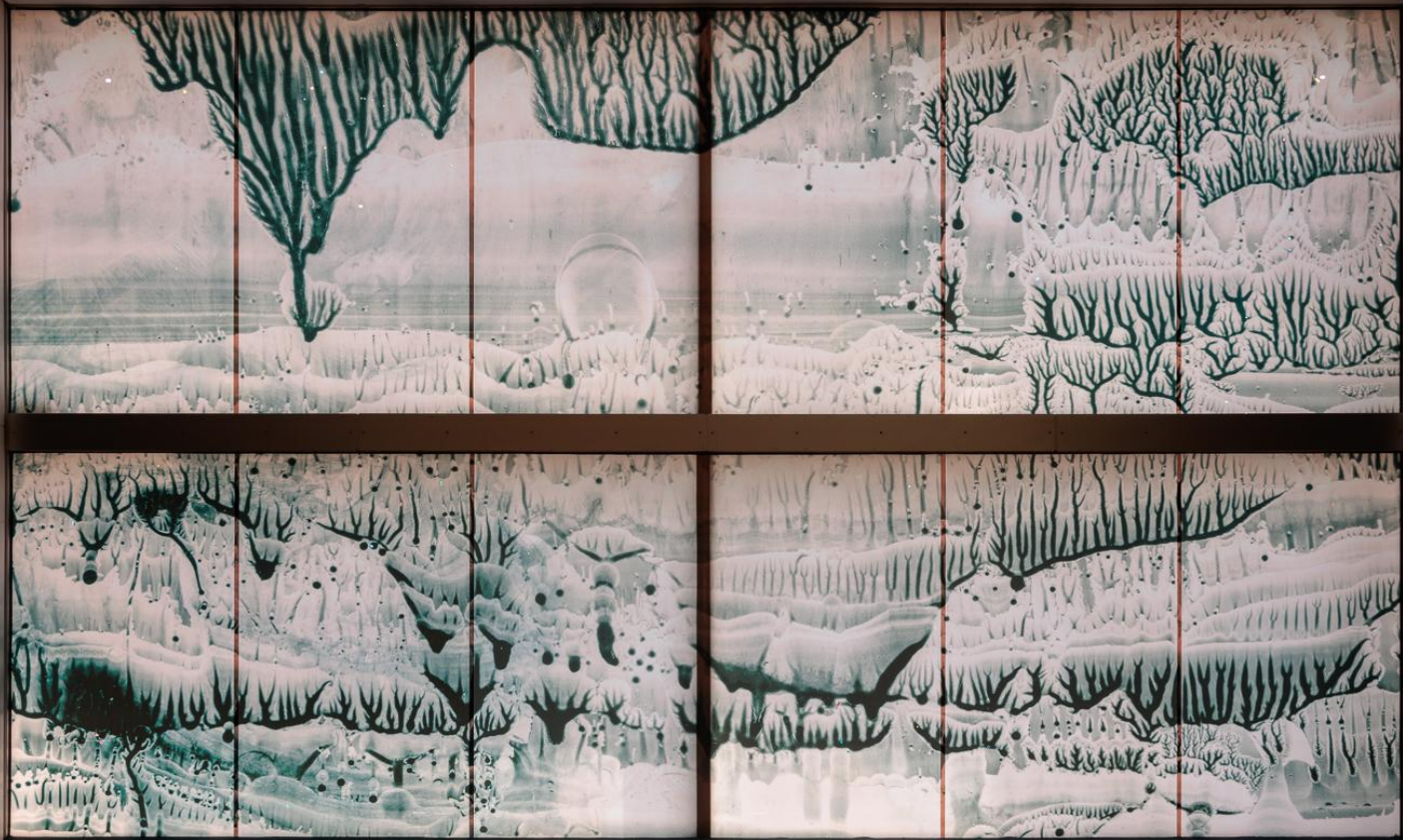
detail: *trapezoidal window - creatures* 2022 oil paint, spray paint, polypropylene, colored gels, plexiglass, LED modules, african mahogany, pine, aluminum, lacquer 79.5 x 13.5 x 3.5 in (201.93 x 34.29 x 8.89 cm)

A vertical, trapezoidal artwork titled 'spheres'. The background is dark with light-colored, textured, organic patterns. Several large, glowing spheres of different colors (orange, yellow, purple) are scattered across the composition. Some spheres have a textured, cratered surface, while others are smooth. Thin, glowing lines and small dots are also visible, creating a sense of depth and light. The overall effect is a celestial or abstract composition with a focus on light and texture.

Detail: *trapezoidal window - spheres* 2022 oil paint, spray paint, polypropylene, colored gels, plexiglass, LED modules, african mahogany, pine, aluminum, lacquer 79.5 x 13.5 x 3.5 in (201.93 x 34.29 x 8.89 cm)







*fontanelle*  
2022 vinyl,  
colored gels  
14 ft x 24 ft


*trapezoidal window - trees* 2022 oil paint, spray  
paint, polypropylene, colored gels, plexiglass, LED  
modules, african mahogany, pine, aluminum, lacquer  
79.5 x 13.5 x 3.5 in (201.93 x 34.29 x 8.89 cm)






*trapezoidal window - braids* 2022 oil paint, spray  
paint, polypropylene, colored gels, plexiglass, LED  
modules, african mahogany, pine, aluminum, lacquer  
79.5 x 13.5 x 3.5 in (201.93 x 34.29 x 8.89 cm)





*wing wing* 2022 acrylic, interfacing, thread,  
silk, raw silk, cotton 260 x 12 x 168 in (610 x  
30 x 427 cm)



reverse side of *wing wing* 2022 acrylic,  
interfacing, thread, silk, raw silk, cotton 260 x  
12 x 168 in (610 x 30 x 427 cm)



Interview with Baltic  
[Baltic Bites: Laleh Khorramian](#)

Interview with Elephant. In conversation with Mika Rottenberg  
[The BALTIC Interviews: "Every Time I Come to Your Studio it's a Magical Place"](#)

The Guardian  
<https://www.theguardian.com/artanddesign/2022/apr/12/the-vasseur-baltic-artists-award-2022-review-well-pickle-my-walnuts>

Laleh Khorramian (b. 1974 Tehran, Iran) studied at the Rhode Island School of Design (Providence, RI), received her undergraduate degree at The School of The Art Institute of Chicago (Chicago, IL), and her MFA at Columbia University (New York, NY). She has exhibited internationally, with solo shows including The BALTIC Centre for Contemporary Art (Gateshead, UK); The Third Line (Dubai, United Arab Emirates); Midnight Moment: Laleh Khorramian, Times Square (New York, NY); St. Louis Art Museum (St. Louis, MO); Galerie Krinzinger (Vienna, Austria); Salon 94 Freemans, (New York, NY); She has participated in numerous group exhibitions, including Alexander Gray Associates (Germantown, NY); Guggenheim (Abu Dhabi, United Arab Emirates); Statements, Art Basel (Basel, Switzerland); MASS MoCA (North Adams, MA); Ballroom Marfa (Marfa, TX); Site Santa Fe Biennale (Santa Fe, NM); New Frontier Shorts, Sundance Film Festival (Park City, UT); Thaddaeus Ropac Gallery (Salzburg, Austria); Saatchi Gallery (London, United Kingdom); and Greater New York 2005, MoMA P.S.1 Museum (Long Island, NY). Select awards include the Vasseur BALTIC Artists' Award, the Pollock Krasner Foundation Grant, the Pat Hearn and Colin Deland Foundation Grant, and the Agnes Martin Award.

